

# BAUWERK

*Parkett*

Press release

## A Piece of Stability

**As part of its Parquet Magic charity campaign, Bauwerk Parkett provides a home of SOS-Kinderdorf e.V. Düsseldorf (D) with solid parquet floors.**



*The Garath neighbourhood is not necessarily what you imagine when you think of Düsseldorf as a centre for fashion and culture. The capital of the state of North Rhine-Westphalia itself refers to Garath as ‘in particularly severe need for social action.’ Developed in late 1950’s and early 60’s, this residential area is facing many challenges, which especially affect its children. Thus, as part of its Parquet Magic campaign, Bauwerk Parkett donated a parquet floor to a residence in SOS-Kinderdorf children’s village in Garath.*

Garath has the highest share of single parents in Düsseldorf’s municipal area. In addition to that, nearly every second child lives in a family that receives state assistance. Vandalism and neglect have become an everyday sight in the neighbourhood; living accommodations are often cramped and, in many cases, do not meet even the most basic standards.

### **SOS-Kinderdorf e.V.: spaces for grown-ups and kids to be together in**

There have been SOS-Kinderdorf e.V. facilities in Düsseldorf since 2009, with countless communal living offers in the neighbourhood. A completely new 4200-square-metre estate is currently being developed in Matthias-Erzberger Street in Garath: three

**Bauwerk Group Schweiz AG**

Neudorfstrasse 49, CH-9430 St. Margrethen, Phone +41 71 747 74 74, [info@bauwerk.com](mailto:info@bauwerk.com) [bauwerk-parkett.com](http://bauwerk-parkett.com)

[Facebook](#), [Instagram](#), [LinkedIn](#), [YouTube](#) [Pinterest](#)

# BAUWERK

## *Parkett*

detached buildings providing many different 'neighbourhood living room' options bringing children and adults under one roof. This is another step in development of the children's village idea. Originally, in the time after the war, the focus was more on the countless orphaned children in rural areas. Today, it has shifted to the increasingly difficult social conditions in cities and to also supporting adults.

The SOS-Kinderdorf children's village in Düsseldorf consists of a typical set of five residences used to accommodate children and teens who, for various reasons, could no longer stay in their previous environments.

### **New home for six children**

Construction work has just been completed in one new house intended for long-term stay. It was fully renovated, modernised and rebuilt. The plot of land and the two-storey building constructed on it in 1968 sit in the middle of the village. Originally a duplex house, it became a cosy and inviting single-family house with rooms for six children and their care providers. Each child has their own room. On the ground floor, there are large common areas with an open kitchen, dining room and living room — including direct, ground-level access to the garden. The children's care supervisors, too, have their own overnight stay rooms and recreation rooms. Here, care is provided to the children in an environment similar to a family, and it is preferred that the children in this house stay together with their siblings.

The SOS-Kinderdorf e.V. facilities are partly financed through state funding, although a substantial share comes from donations. The public money is coming increasingly under scrutiny, and the facilities have to expect cutbacks at any time. More and more, organisations like SOS-Kinderdorf e.V. are made to rely on charity.

### **A parquet like a treasure: Bauwerk Parkett's solid parquet strips throughout the house**

Bauwerk Parkett brought a generous donation to the project, following its entry in the 2025 Parquet Magic campaign: some 170 square metres of solid parquet in a parallel pattern, made of 100% FSC®-certified oak, now offer a cosy foundation of wellness in all of the house's rooms, except for the bathrooms. The industrial-look glued parquet is remarkably timeless, very durable and lasting.

'The children that live with us typically come out of some of the most difficult circumstances, and often have multiple traumas,' said Cora Müller, project manager at SOS-Kinderdorf Düsseldorf. 'As a rule, they stay here for a very long time. This is why everything is geared towards the long term in our homes,' she explained. 'Two younger children have just moved in,' Cora Müller noted. 'So, a lot of the play still happens on the floor. The by Bauwerk Parkett is substantially more pleasant and warmer than any other

# BAUWERK

## *Parkett*

kind of flooring. It's also good-looking, robust and high-quality. The children will be able to have fun on it for years to come.' Right now, everyone staying at the home treats the parquet like a treasure; Müller: 'We take the shoes off, always — the children and the adults.'

Due to high demand, the remaining four places in the family-style sibling residence group will be occupied this year, and six children will meet the end of the year in the safe space of the new home.

Are you involved in a social action and would love to see it receive a donation of parquet? From November, associations and social organisations will once again be able to submit their project proposals to Bauwerk Parkett. For more details about the campaign and how to apply, visit: [bauwerk-parkett.com/parquet-magic](https://bauwerk-parkett.com/parquet-magic)

### **Details and facts**

Property owner: SOS-Kinderdorf Düsseldorf, [SOS-Kinderdorf Düsseldorf](#)

Installer: Parkett Interfloor GmbH, Düsseldorf, [Parkett Interfloor GmbH](#)

Architecture: Dipl.-Ing. Sabine Bogawski, Dormagen-Zons

Completion: September 2025

Parquet: 172 m<sup>2</sup> Solid Parquet made of 100% FSC®-certified natural Oak

Photos: © Bauwerk Parkett, Photographed by: Thomas E. Götz, [www.goetz-foto.de](https://www.goetz-foto.de)

### **For press enquiries, please contact:**

Rainer Häupl

bering\*kopal GbR, communications agency

P + 49 (0) 711 74 51 75916

[rainer.haeupl@bering-kopal.de](mailto:rainer.haeupl@bering-kopal.de)

[www.bering-kopal.de](https://www.bering-kopal.de)

*St Margrethen (CH), October 2025*

*Reprint free of charge/specify source*

# BAUWERK

## *Parkett*

**1** There is a spacious common area on the ground floor of the house, with an open kitchen, dining room and living room. The garden can be accessed at ground level as well. Bauwerk Parkett's solid parquet in Oak Nature was installed here and in almost all other parts of the building. Photo: © Bauwerk Parkett

**2** SOS-Kinderdorf e.V. renovated and rebuilt a late-1960's duplex house not far from Garath's high-rises. By the end of the year, it will become a new and cosy home for six children. Photo: © Bauwerk Parkett

**3** Delighted by the durable, high-quality parquet (left to right): Cora Müller (SOS-Kinderdorf e.V.), Jan Loosen (Parkett Interfloor GmbH managing partner), Sven Keitlinghaus (Bauwerk Parkett Deutschland regional manager for North Rhine-Westphalia) and Carolin Bauer (Bauwerk Parkett Deutschland marketing specialist) in the house's garden. (from left to right) Photo: © Bauwerk Parkett

**4** In the hallways and children's rooms on the upper floor, too, the new floor radiates warmth and cosiness. Having a beautiful room of their own is a godsend for the children that are admitted here. Photo: © Bauwerk Parkett

1.



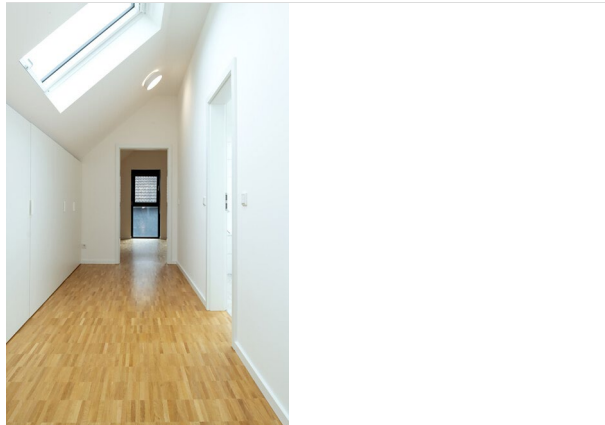
2.



3.



4.



# BAUWERK

## *Parkett*

**5** Floor transitions without tripping hazards and high-quality, lasting materials, such as solid parquet in Oak Nature, with its warm and natural look. Everything in the house is designed to accommodate the children's wellness and their long stay here. Photo: © Bauwerk Parkett

5.



### **Bauwerk Parkett – Built for a lifetime**

What began in 1935 with the invention of solid parquet by Swiss pioneer Ernst Göhner is still setting new standards for ambitious design and healthy living today. Just like every tree and every piece of wood, each of our responsibly manufactured planks is sustainable and unique. A fusion of Swiss engineering and authentic nature results in extraordinary living experiences: today, and for future generations.

[bauwerk-parkett.com](https://bauwerk-parkett.com)

**Bauwerk Group Schweiz AG**

Neudorfstrasse 49, CH-9430 St. Margrethen, Phone +41 71 747 74 74, [info@bauwerk.com](mailto:info@bauwerk.com) [bauwerk-parkett.com](https://bauwerk-parkett.com)

[Facebook](#), [Instagram](#), [LinkedIn](#), [YouTube](#) [Pinterest](#)